

Product No. Z10072

## Metal Adjustable Pedestals

### Technical Datasheet

A height adjustable metal pedestal range designed to create safe and reliable external terraces.



# Metal Adjustable Pedestal

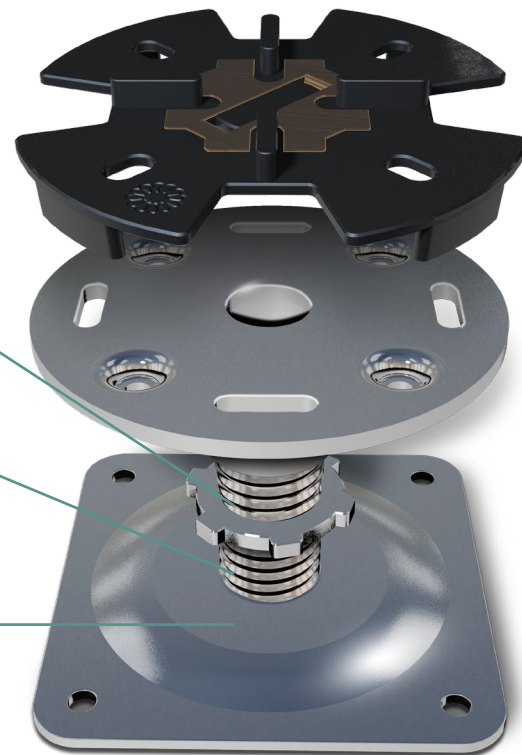
## Technical Datasheet

A height adjustable metal pedestal range designed to create safe and reliable external terraces. Fast and easy to install, they are engineered to support pavers and decking, reducing material, construction, and lifestyle costs.

Integral locking ring to avoid unwanted movement

Adjustable to suit height build-up requirements

Formed base plate creates a stable platform and spreads the load evenly across the surface



## Fire-Rated Adjustable Pedestals

The Metal Adjustable Pedestals are manufactured from zinc-coated steel which is a non-combustible material deemed to be Class A in accordance with the European Commission decision of 4 October 1996 (**Document: 96/603/EC**)



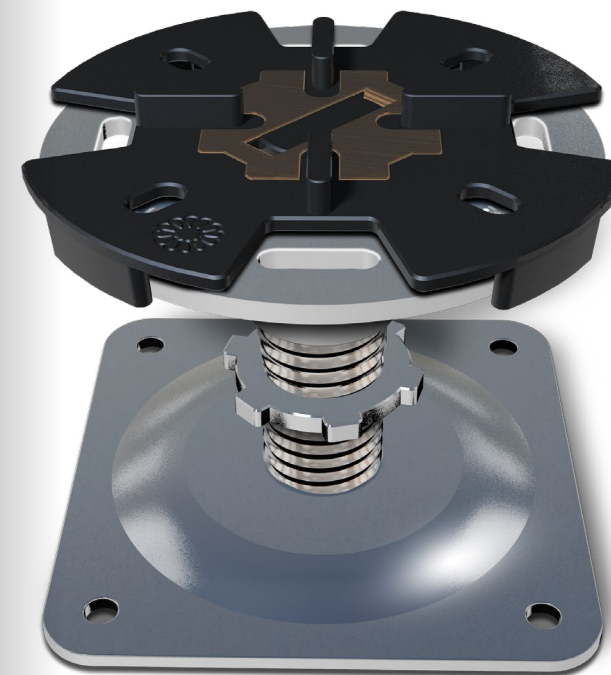
## Sustainability and Environmental Impact

Steel is very sustainable because once it is made, it can be used forever. Steel can be recycled an infinite amount of times and be used with no downgrading in quality.

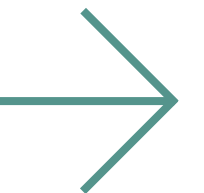
The non-renewable resources used to make steel, like minerals and fossil fuels, are not wasted because the steel will be used forever.

Steel is amongst some of the materials that are certified under the Green Buildings Rating System. Such as International Green Construction Code (IgCC) and USGBC's LEED (Leadership in Energy and Environmental Design) just to name a couple of sustainable certifications steel possesses.

Available in a range of 16 adjustable height variations.



Metal Adjustable Pedestal  
Product Information Overleaf





## Product Information

Product SKU	Height Range Minimum (mm)	Height Range Maximum (mm)	Weight Per Ped (Kg)	Weight Capacity (kN)	Carbon Embodiment
Z10072	28	37	0.36	12	1.09
Z10073	32	42	0.39	12	1.18
Z10074	42	52	0.40	12	1.22
Z10075	52	72	0.44	12	1.33
Z10076	62	127	0.46	12	1.36
Z10077	77	117	0.50	12	1.51
Z10078	92	142	0.51	12	1.55
Z10079	112	187	0.59	12	1.79
Z10080	137	212	0.63	12	1.90
Z10081	152	227	0.66	12	2.00
Z10082	187	262	0.68	12	2.06
Z10083	202	227	0.72	12	2.18
Z10084	237	312	0.76	12	2.30
Z10085	252	327	0.83	12	2.50
Z10086	302	337	0.85	12	2.57
Z10087	352	427	0.92	12	2.78

### Maintenance

Once installed the pedestals are typically hidden and not accessible and do not require any further maintenance.

### Fixing

Free-standing installation on to a firm, level surface. The top bracket clamps to the joist.

### Composition

Zinc-coated steel.

### Compressive Strength

The maximum weight load for Altivo Metal Adjustable Pedestals is 1 tonne.

Until testing is concluded, it can be assumed that the maximum weight-load of the Metal Adjustable Pedestals is greater than 1 tonne. The measurements include the total height of the pedestal and connector clip.

The life span of Altivo Metal Adjustable Pedestals based on the zinc passivated treated steel is around 15 years.